

HEAVY DUTY DIESEL ENGINE OIL

Fleet Pro™ Ultra 15W-40



Fleet Pro™ Ultra 15W-40

Superior Protection for Harder-Working Engines

The Fleet Pro™ Series is formulated for today's high-performance, low-emission exhaust gas recirculation (EGR) diesel engines, including engines with particulate traps. These oils provide year round wear and corrosion protection that enable engines to run smoother and stay cleaner longer, support extended drain intervals, reduce downtime and increase operating profitability.

For diesel or mixed fleets, Fleet Pro Ultra 15W-40 delivers fast all-season starts and dependable, predictable engine operation. It is formulated with an exclusive chemistry that exceeds tough API CJ-4, CI-4 PLUS and CI-4 requirements, and protects major equipment investments with:

- Higher TBN and viscosity retention
- Exceptional low-temperature flow
- Enhanced oxidation stability
- Outstanding soot handling, deposit control and engine protection

On-road or off, mining or machining, engines that work harder need protection that works harder, too. You can count on that protection day after day, mile after mile, with Fleet Pro Ultra 15W-40 Heavy Duty Diesel engine oil from Pinnacle Oil.

Highest TBN

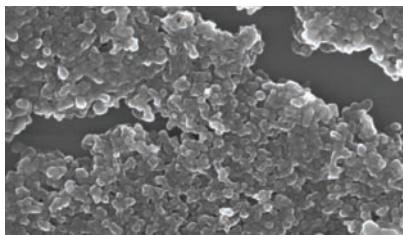
Fleet Pro Ultra 15W-40 has among the highest TBN levels available for API CJ-4 certified oils. It neutralizes more of the acids produced by severe operating conditions, EGR engines and higher sulfur fuels, providing maximum component protection from corrosion. Fleet Pro Ultra 15W-40 engine oils demonstrate outstanding performance in applications using a variety of fuel sulfur levels: off-road, low sulfur diesel (LSD) and ultra low sulfur diesel (ULSD).

Viscosity Retention

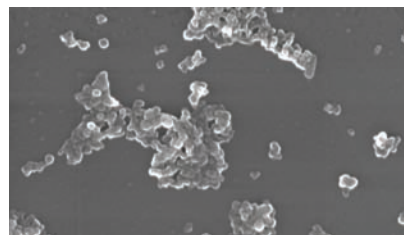
Viscosity, the most important lubricant property, can be compromised by oxidation and soot contamination. Fleet Pro Ultra 15W-40 is formulated to maintain its viscosity even after 250 hours of severe operation in an EGR engine.

Soot Control

The formation of soot in an engine is part of the normal combustion process; controlling its impact on oil thickening and engine wear is the role of a modern engine oil. Fleet Pro Ultra 15W-40 oil contains unique "soot busting" chemistry to protect engine components from the damaging effects of soot. This formulation keeps soot from agglomerating, thereby reducing sludge and deposit formation, and corrosion of metal surfaces.



Soot agglomerates or masses in heavy duty diesel oil, which causes thickening and abrasive wear.



Fleet Pro Ultra disperses soot into finer particles, providing an increased level of engine protection.

Specifications

Fleet Pro Ultra 15W-40 meets or exceeds the performance requirements for:

- Allison C4
- Caterpillar ECF-3/1
- Detroit Diesel 93K218/50/60 series
- MBE 4000/900
- Renault VI RDL-3
- Volvo VDS 4/3/2
- MTU Type I and II Engine Tests
- API CJ-4/CI-4 PLUS/CI-4/CH-4/CG-4/SM/SL
- Cummins CES20081
- Mack EO-O Premium Plus
- Mercedes-Benz p228.3
- Navistar TSI-97-12-03
- ACEA E7-04

